

Box Properties

--Description--

Name:

Type: Vented Box

Shape: Prism, square

--Box Parameters--

Vb = 2.317 cu.ft

V(total) = 2.915 cu.ft

Fb = 30.74 Hz

F3 = 26.4 Hz

Fill = none

--Vents--

No. of Vents = 1

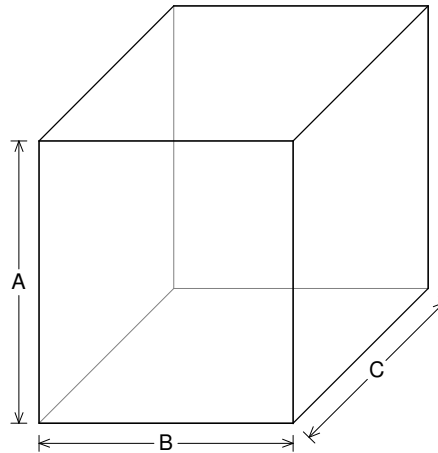
Vent shape = rectangle

Vent ends = one flush

Hv = 2 in

Wv = 6 in

Lv = 13 in



--External Dimensions--

A = 20 in

B = 18 in

C = 18 in

--Internal Dimensions--

A = 18.5 in

B = 16.5 in

C = 16.5 in

--Wall Thickness--

Front = 0.75 in

Side = 0.75 in

Driver Properties

--Description--

Name: XXX 12 D4

Type: Standard one-way driver

Company: RE Audio (2015)

--Configuration--

No. of Drivers = 1

Dual voice coils = parallel

--Driver Parameters--

Fs = 24.54 Hz

Qms = 6.503

Vas = 1.234 cu.ft

Xmax = 2.3 in

Sd = 74.88 sq.in

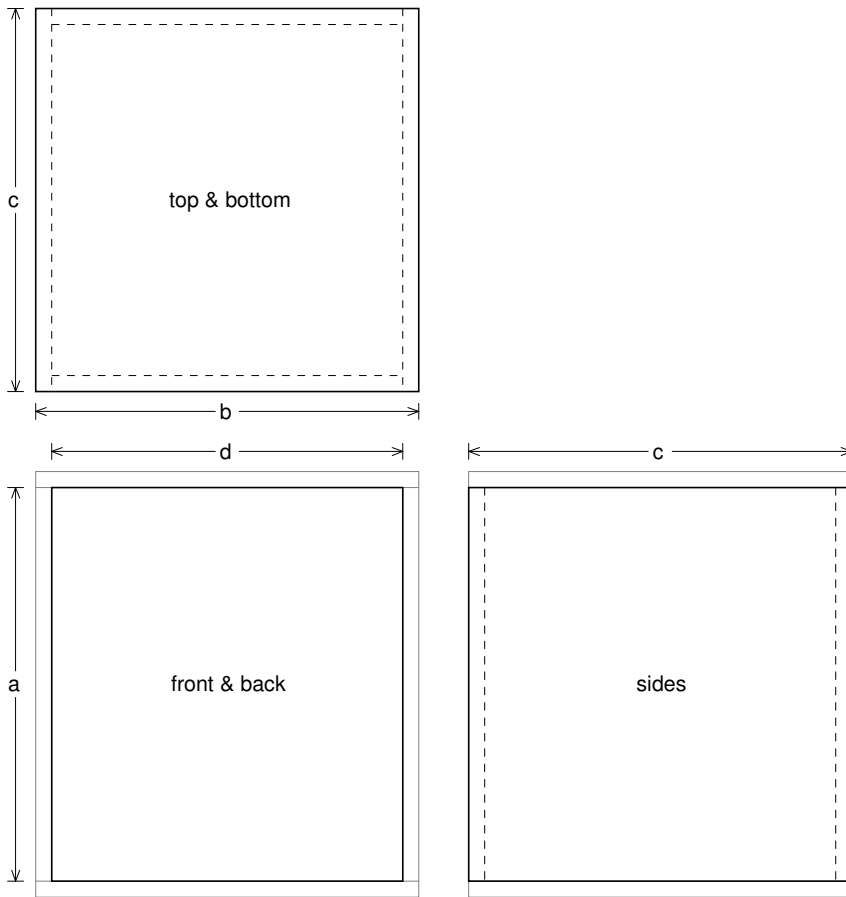
Qes = 0.315

Re = 1.743 ohms

Le = 2.012 mH

Z = 2.092 ohms

Pe = 2000 watts



Box Parts

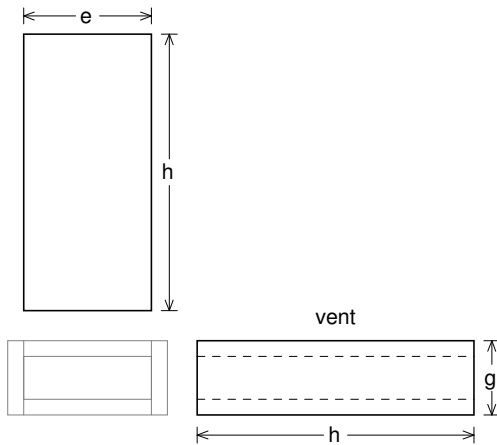
Box Shape: Square Prism

- 1 Top, 1 Bottom: depth (c) = 18 in
width (b) = 18, thickness = 0.75 in
- 1 Front, 1 Back: height (a) = 18.5 in
width (d) = 16.5, thickness = 0.75 in
- 2 Sides: height (a) = 18.5 in
depth (c) = 18, thickness = 0.75 in

--Driver Mounting--
Mounting: Front

--Vent Parts--

- 1 Top, 1 Bottom:
width (e) = 6, length (h) = 13 in
thickness = 0.75 in
- 2 Sides:
height (g) = 3.5, length (h) = 13 in
thickness = 0.75 in





Wiring Diagram

